

# THORN

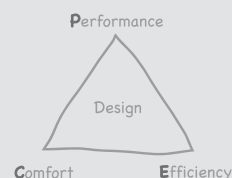
## Voyager E

Competitive emergency lighting  
bulkhead and exit sign



# Voyager E Bulkhead

Economical escape route and anti-panic area lighting



## Performance:

- Optic allows wide luminaire spacing
- 3-hour maintained and non-maintained

## Efficiency:

- IP65 protection
- Easy fix
- Hinged gear tray for easy internal access

## Comfort:

- High brightness green LED battery charging indicator for easy viewing
- Ease of mind emergency lighting

- IP65 Bulkhead supplied complete with lamp and self adhesive legend kit
- Suitable for escape route and anti-panic (open area) lighting applications
- 3 hour maintained and non-maintained versions
- Durable polycarbonate construction



## Lamps

8W, T16 (FDH) 3000K linear fluorescent. Cap: G5

## Materials/Finish

Body: polycarbonate (colour similar to RAL 9003)  
Diffuser: polycarbonate, prismatic  
Gear tray: mild steel (colour similar to RAL 9003)

## Installation/Mounting

Surface with 20mm cable entry each end and rear.  
Drill points for mounting on recessed ceiling or wall boxes including BESA.  
3/4 way terminal block, 2x1.5mm<sup>2</sup> or 1x4 mm<sup>2</sup> capacity.)

## Standard

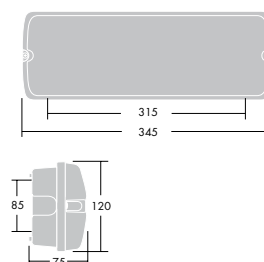
Designed and manufactured to comply with EN 60598.2.22  
Ⓢ Class I electrical  
850° fire retardant  
⚡ IP65 ⚡ CE



**Ordering Guide** Supplied complete with lamp and legends.

Description	Ilcos code	Socket	Weight (kg)	SAP code
VOYAGER E BULKHEAD E3M	FDH	G5	1.27	96502952
VOYAGER E BULKHEAD E3NM	FDH	G5	0.9	96502953

E3M - maintained, E3NM - non-maintained



**Voyager E Bulkhead**  
Lamp: 8W T16 Maintained  
DLOR: 0.7 LOR: 0.84 LMC: E

## 2nd escape route

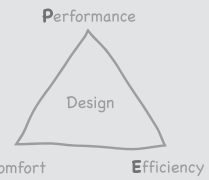
Min illum (lux)	Mounting height (m)	Max spacing (m)	
		Centre to end	Between centres
2.5	1.55	5.20	
1.0 trans	3	1.05	5.00
2.5	1.4	4.30	
1.0 axial	3	1.05	4.20

## Open area

Min illum (lux)	Mounting height (m)	Max spacing (m)			
		Centre to end		Between centres	
		Trans	Axial	Trans	Axial
2.5	1.85	1.85	6.60	6.2	
0.5	3	1.8	1.8	6.90	6.5
	3.5	1.65	1.65	7.10	6.7

# Voyager E Exit Sign

Economical escape route signage



**Performance:**  
- 34m viewing distance  
- 3-hour maintained

**Efficiency:**  
- Easy fix  
- Hinged gear tray for easy internal access

**Comfort:**  
- High brightness green LED  
battery charging indicator for easy viewing  
- Ease of mind emergency lighting

- Suitable for escape route and anti-panic (open area) lighting applications
- Integrated door illumination panel
- Supplied complete with lamp and three legend plates
- Strong, durable construction
- 3 hour duration



## Lamps

8W, T16 (FDH) 3000K  
linear fluorescent. Cap: G5

## Materials/Finish

Body/Gear Tray: mild steel  
(colour similar to RAL 9003)  
Panel: polycarbonate  
(colour similar to RAL 9003)

## Installation/Mounting

Wall mounted with cable 20mm  
cable entry top and rear.  
Screw fixings (3) on rear. 3/4 way  
terminal block 2x1.5mm<sup>2</sup> or  
1x4 mm<sup>2</sup> capacity.

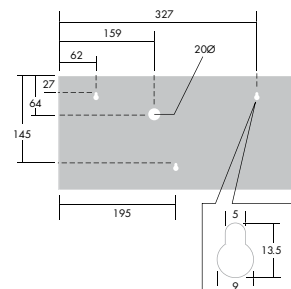
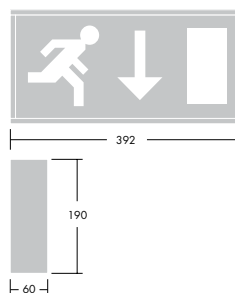
## Standard

Designed and manufactured to  
comply with EN 60598.2.22  
⚡ Class I electrical  
850° fire retardant  
IP20  $\nabla$ /CE

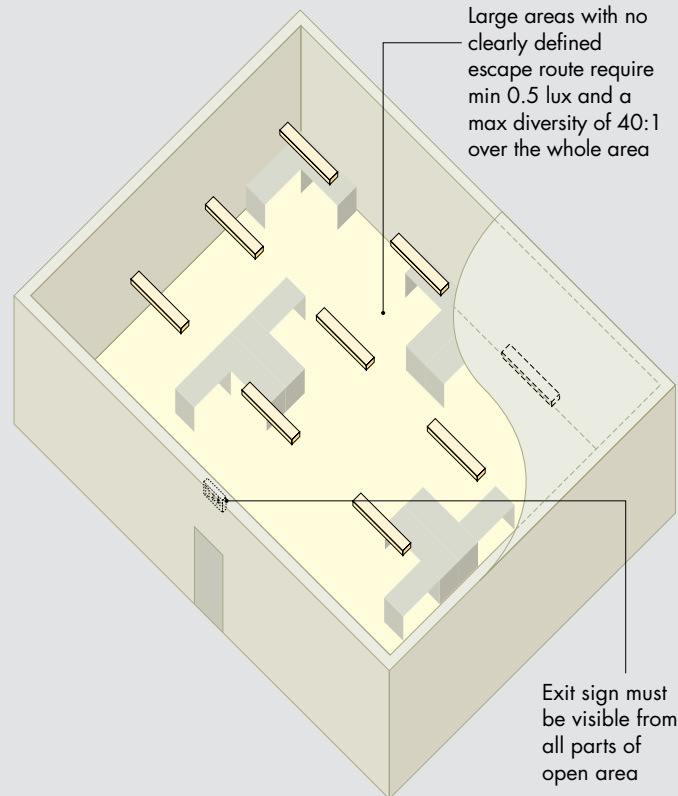
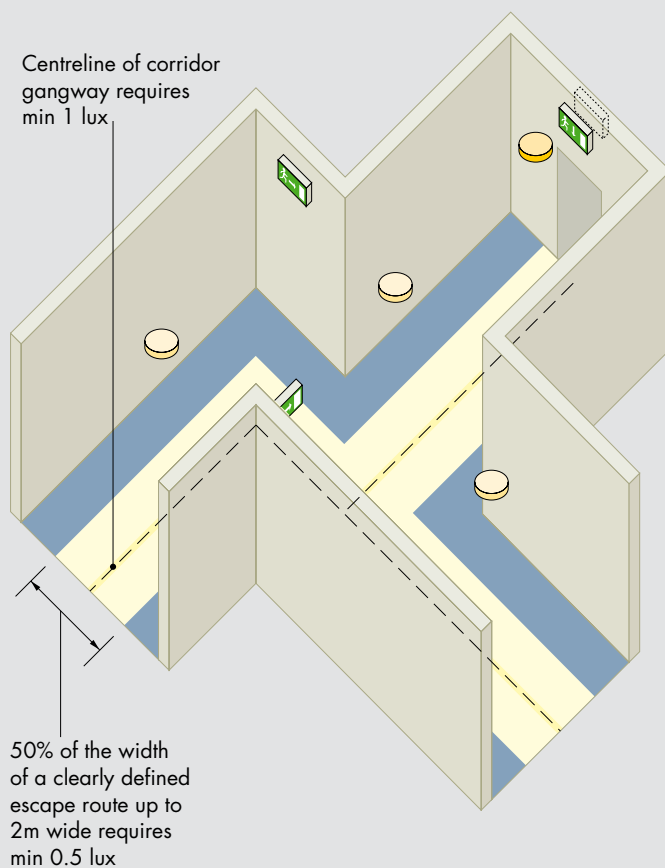


**Ordering Guide** Supplied complete with lamp and legends.

Description	Ilcos code	Socket	Weight (kg)	SAP code
VOYAGER E EXIT E3M	FDH	G5	2.6	96502954
E3M - maintained				



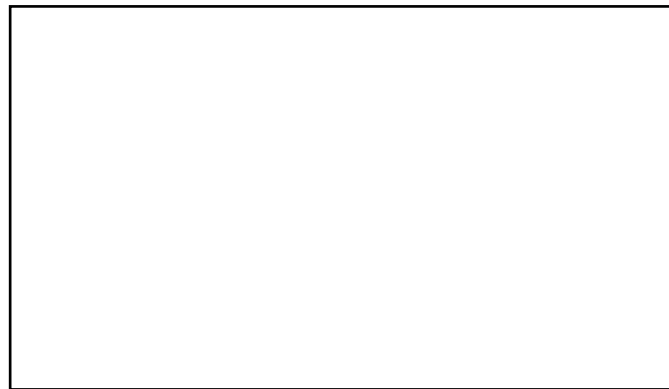
# Where to use Voyager E Bulkhead and Voyager E Exit



## Head Office

Thorn Lighting Limited  
Silver Screens, Elstree Way, Borehamwood,  
Hertfordshire WD6 1FE, UK  
Tel: 020 8732 9800  
Fax: 020 8732 9801  
E-mail: [brochures@thornlight.com](mailto:brochures@thornlight.com)

[www.thornlighting.com](http://www.thornlighting.com)



Thorn Lighting Limited is constantly developing and improving its products. All descriptions, illustrations, drawings and specifications in this publication present only general particulars and shall not form part of any contract. The right is reserved to change specifications without prior notification or public announcement. All goods supplied by the company are supplied subject to the company's General Conditions of Sale, a copy of which is available on request.

Publication No. 387(INT) Publication Date: 04/07